

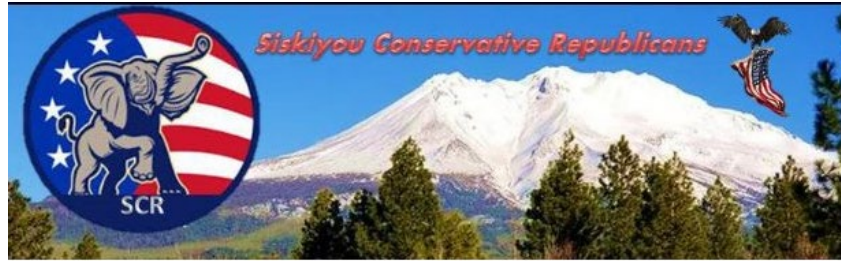
Siskiyou Conservatives

Founded March 2020



May 2026

Volume 8 Issue 5



<https://www.siskiyouconservatives.com>

Thursday May 14

Meet and Greet 11:00

**Meeting starts @ 11:30
Sharp**

Speakers @ 11:30

Lunch @ 12:00

**Montague Community
Church**

150 S 12th St.

Speakers

- **Michael DeArton**- running for Siskiyou County Superior Court Judge
- **Allan Carver**- Superintendent of Schools in Siskiyou County
- **Michelle Hogue**- Running for Superintendent of Schools, Siskiyou County
- **Ben Bishop** running for Dist.5 Supervisor

Table of Contents

| | |
|------------------------------|-------|
| Speaker Bios | 2-5 |
| Did You Know? | 6-7 |
| Phantom Voter Report | 8 |
| Prop 50 | 9 |
| Nicolette Hahn Niman | 10-11 |
| Superintendent Duties | 12 |
| James Gallagher | 13 |
| Illegal Grows | 14 |
| Siskiyou County Water Crisis | 15 |
| AB 1664 | 17 |
| Memorial Day | 18 |
| No Grizzlies | 19 |
| Elected Officials | 20-22 |



Buffet Lunch: \$15

**Baby Back Ribs or
Chicken Lunch**

Reservations call

Marilyn 530-572-8826

Kathy 530-905-2492

Or Email
rocknflowerhaven@yahoo.com





Michael DeArton

Michael DeArton is running for Siskiyou County Superior Court judge, bringing 20 years of legal experience — four as a Siskiyou County court commissioner, ten as a Siskiyou County prosecutor, and six in civil practice based in Shasta County. Siskiyou County is home. His wife is a local teacher; his daughter graduated from a Siskiyou County high school; and his son is a junior there now. Michael and his wife serve on local boards and are regular volunteers at community events. **Michael is asking for your vote to bring fair, experienced, and steady judgment to the bench.**



Allan Carver

Allan Carver serves as the Superintendent of Schools in Siskiyou County, California, and leads the Siskiyou County Office of Education. He was elected in June 2022 and began his four-year term in January 2023. Allan is a servant leader who genuinely believes in collaboration and the influence of leadership on employees, organizations, and outcomes.

Prior to his election, Allan served as the Deputy Superintendent at the Siskiyou COE for four years, leading the Educational Services Department. The Siskiyou COE provides educational services to the 24 school districts and two charter schools in the county, including business services, special education services, and professional learning. He has spent the past 29 years working in private, international, and public education, where he has held many leadership positions, including site Principal and district Superintendent.

Allan spent five years teaching in foreign countries and learning about other cultures, religions, and languages. His duties included teaching physical education and health, and serving as an athletic director. He spent a year in Kuwait City, Kuwait, and taught at the American School of Kuwait. He then lived for two years in Ifrane, Morocco, where he taught at Al Akhawayne School of Ifrane. The final two years living as an expatriate were spent in Guatemala City, Guatemala, teaching at the American School of Guatemala.

His administrative career began in 2009 as a Principal in the newly formed Scott Valley Unified School District. He spent 8 years serving as an administrator in the Scott Valley USD, where he eventually led five different schools in the district, including three elementary schools (TK-5), a middle school (6-8), and a community day school (9-12). He served as the district Superintendent for Scott Valley USD for five years before accepting the Deputy Superintendent position at the Siskiyou County Office of Education.

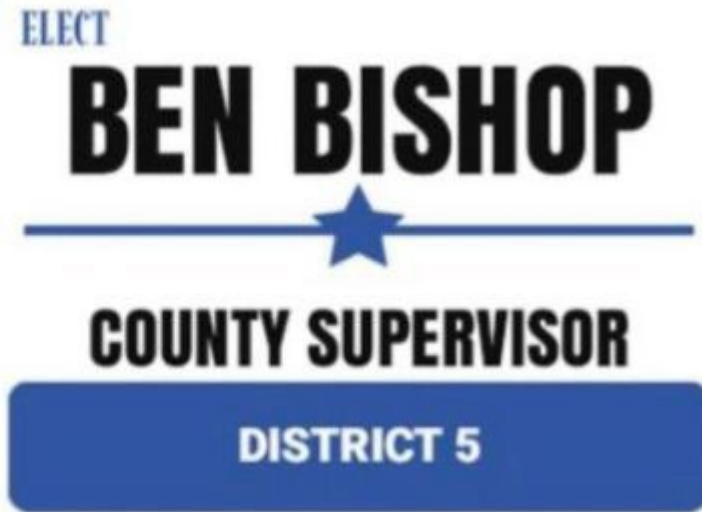


Michelle Hogue – Candidate for Siskiyou County Superintendent of Schools

Michelle Hogue has lived in Siskiyou County for 35 years and has dedicated 31 years to serving her community. She spent 12 years as a Behavioral Health Case Manager and Crisis worker, during which she built relationships with residents from diverse communities across the county. This experience provided her with valuable insights that she later used in her role with the Siskiyou County Office of Education as a Special Education Teacher for students with Moderate to Severe needs. Michelle has worked relentlessly to promote equity and inclusion, striving to ensure that every child, regardless of background, disability, or life circumstances, has access to the resources they need to succeed.

As a Special Education Administrator, Michelle has collaborated with districts across the county. Supervising classrooms on multiple campuses throughout Siskiyou County has given Michelle a close-up view of each school. Getting to know the school administrators, staff, students, and their families highlights the unique needs of each school. She is dedicated to ensuring every student in every school has access to high-quality, inclusive learning opportunities. Michelle has advocated for and managed programs that equip students with essential life skills, confidence, and a vision of future opportunities. She worked directly with students, shoulder to shoulder, for many years on vocational work crews to help them learn valuable skills they can carry into life after high school. Preparing students for life after high school is a high priority. In response to parent and community input, Michelle wants to expand CTE and vocational opportunities for all students. This will be achieved by collaborating with the Department of Vocational Rehabilitation and California Department of Education, and partnering with community colleges and local businesses.

For 18 years, Michelle served as a Special Education Teacher and Special Education Administrator, dedicated to advocating for students and families in Siskiyou County. She has worked to strengthen family and community partnerships and has always prioritized student success. Her leadership style focuses on collaboration and transparency—building trust through open communication with parents, staff, and all stakeholders. Having worked for the County Office of Education for 18 years, Michelle has an insider's perspective on county policy and procedures that have undermined trust in SCOE among some districts. As County Superintendent of Schools, Michelle will uphold a commitment to collaboration, communication, and transparency, and work to rebuild confidence with all of the districts of our county. She believes that the best decisions for students are made when educators, parents, students, and community members work together to develop and implement policies and build programs that support student achievement. The primary role of a County Office of Education is to support local districts by providing essential services, leadership, and oversight that promote success for all students. Michelle is a first-time candidate bringing fresh energy, perspective and passion for students to the Siskiyou County Office of Education.



I was born in September 1979. At the time, my family lived in Etna, but before I turned one, we moved to Seiad Valley along the Klamath River, where I was raised. I graduated from Happy Camp High School in 1997 and started work the following Monday on a logging crew for Mark Crawford.

In September 2000, I married my wife in her home state of Idaho. We moved to Scott Valley in 2001, and that November, we welcomed our first child. Over the years, our family grew to ten children—six girls and four boys—with our youngest born in April 2016.

In 2003, I started my own logging business in partnership with my dad. After he retired in 2008, I incorporated the business and continued operating it until 2016, when I sold it to Layton Brothers Logging. That same year, I began working for Scott River Custom Cabinets while also shoeing horses on the side. As the shoeing business grew, I made the decision to work with my kids, and made it my full-time career. Last year, my wife and I celebrated our 25th anniversary. Three of our children are now married, and we have two grandchildren. Since 2016, we've lived in our home in Etna.

Did You Know.

Submitted By Donna Bacialupi, Americanism Chairperson

At the end of the America's Civil War, 1865, communities in the North and South, Black and White, decorated the fallen soldiers' graves with flowers calling the day "Decoration Day". On May 5, 1868, the Grand Army of the Republic issued Order No 11, the "Memorial Day Act" to remember the Nations dead. (The ceremony date was changed to May 30th because there were more beautiful flowers available by then.) About 11,250 Black and White Union and 350 Confederate soldiers were buried in Arlington Cemetery, with more than half buried as "Unknowns".

The Tomb of the Unknown Soldier, perched on a hill overlooking Washington, D.C., at Arlington National Cemetery, is more than a monument... it is a living symbol of sacrifice. While the monument itself is powerful, the most captivating aspect of the site is the Sentinels of the 3rd U.S. Infantry Regiment known as the "Old Guard". Their mission is defined by a level of precision and dedication that borders on superhuman.

The guards are volunteers who undergo a rigorous selection and training process. Roughly 80% of applicants fail to earn "Tomb Guard Identification Badges," the third least awarded badge in the U.S. Army. Once selected, a Sentinel's life revolves around "the mat". Every movement is dictated by the number 21 symbolizing the 21-gun salute, the highest military honor.

A guard takes 21 steps across the black mat, faces east for 21 seconds, faces north for 21 seconds, and then takes 21 steps back. Their rifle is always carried on the shoulder away from the Tomb, signaling that the Sentinel stands between the public and the honored dead.

The uniform is a Masterpiece. Sentinels spend hours each day preparing their uniforms. They do not wear rank insignia so as to not outrank the Unknown. The "spit-shined" boots are built up with thick layers of polish and beeswax often requiring heat to achieve a glass-like finish.

Constant vigilance means that the Tomb has been guarded 24 hours a day, 365 days a year, since July 2, 1937. They do not stop for snow, heatwaves, or even hurricanes. During extreme weather, guards have been known to stay even when given permission to stand down and seek shelter.

The “Changing of the Guard” is one of the most watched military traditions in the world. The Relief Commander conducts a detailed inspection of the new Sentinel’s rifle checking for even a single speck of dust or a fingerprint.

Visitors are required to remain completely silent. If someone becomes too loud or crosses a barrier, the Sentinel will break their silent march, come to a “halt”, and loudly command the person to respect the quiet and candor of the area.

The guarding of the Tomb is a perpetual memory and sacred commitment. By maintaining a standard of absolute perfection, the Sentinels ensure that while the names of those interred are lost to history, their service is never forgotten. The precision of their steps and the gleam of their bayonets serve as a silent promise as long as a Sentinel is on the mat, the Unknowns will never be alone.

Most recently, to reiterate that the sacrifices of America's fallen heroes are never forgotten, in December 2000, the National Moment of Remembrance Act (PL 106-579) established a White House Commission. The commission's message to U.S. citizenry is to give "back to their country, which provides them so much freedom and opportunity" by encouraging Memorial Day activities. The commission also endorsed a **National Moment of Remembrance at 3 pm local time each Memorial Day**, a minute of silence for those who have died in service to the nation.

MAY GOD CONTINUE TO BLESS AMERICA

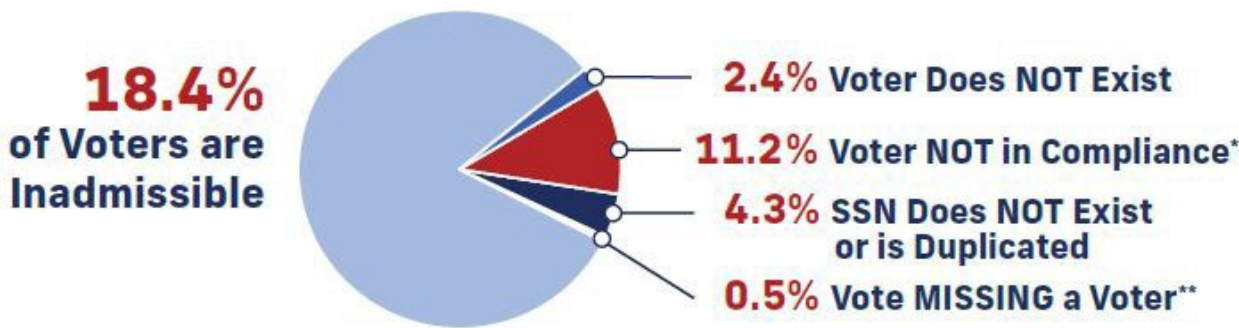


BaciBeef

C O L D S P R I N G S R A N C H
M O N T A G U E C A L I F O R N I A

P R A I S E U P ! B E E F R A I S E D R I G H T .

Debbie Bacigalupi
dbacigalupi@gmail.com / 650-417-1674



California

2024 Phantom Voter Report

This study measures suspected fraudulent registration and voting in the 2024 election in California. The study uses the **Unite4Freedom** process for performing comprehensive identity verification using commercially available fraud-prevention tools. There were 609 random samples taken of the 16 million voters in the 2024 election.

The first check of the data is to see if the voter “exists” in any of the identity verification databases used and if there are address or other compliance issues. Only the people who pass the first check are run through the SSN check. Identities that fail one of the checks are not run through additional checks to ensure they are not “double counted.”

When extrapolating the sample results to the population of vote records in the 2024 Election in California, the following was found:

TOTAL INCONCLUSIVE VOTES: **2,965,861**

PERCENTAGE OF VOTES THAT WERE INADMISSIBLE: **18.4 %**

** **Voter Not In Compliance:** Records were found to have deficiencies, including being outside the election window, meaning if they have any documented affiliation with the address provided, it does not match the timing of the election, or the address is unverifiable meaning either the address itself is not valid (meaning there is no such place—no building with the address in question) or there is no record of the person in question ever being associated with the address—in any government database.*

*****Vote Missing a Voter:** The difference between the certified total ballots cast according to California Statement of Vote, official certified election results, versus the number of votes appearing in an official copy of the California Voter database provided by CA SOS, dated December 16, 2024.*

Bottom Line...WE MUST Clean up our VOTER REGISTRATION ROLLS!

| Total Votes Certified | Voter Does NOT Exist | Voter NOT in Compliance* | SSN Does NOT Exist or Is Duplicated | Vote MISSING a Voter** |
|-----------------------|----------------------|--------------------------|-------------------------------------|------------------------|
| 16,140,044 | 397,538 | 1,802,172 | 689,066 | 77,085 |

Prop 50...Still confused about what all this means for the 2026 election? You're not alone!

Prop 50 only deals with the elections for the US House of Representatives, commonly called "congressional districts". As if this wasn't complicated enough, Congressman LaMalfa passed away in January just halfway through his current term.

So, you've got a couple of things happening on your June 2nd primary ballot:

We are in congressional District 1 until December. Doug LaMalfa was our Representative. His untimely death requires a special election.

- You will see District 1 on the June 2nd ballot to complete the term through December.
- Our recommendation is that you vote for James Gallagher.
- If he is elected with 50% + 1 vote he will be sworn in immediately. It is VITAL that we make this happen.

We become District 2 for the congressional term 2027-2028 because of Prop 50

- You will see a bunch of candidates for District 2 on your June 2nd ballot
- Our recommendation is the Independent **Nicolette Hahn Niman**. Her party will show as NPP on the ballot (no party preference).
- The news lines gave the Dems a 25% advantage and the current District 2 representative who now serves the coastal counties is Jared Huffman. He has no interest in our rural issues and has regularly worked against our interests on water, dam removal, and wolves. We think that Nicolette has the best chance to get to the general election and face off with him for the seat in November.



Endorsement for California's 2nd Congressional District: Conservatives Should Back Nicolette Hahn Niman (NPP) to Defeat Entrenched Liberal Jared Huffman

California's Proposition 50 redistricting — a voter-approved Democratic gerrymander — has fused ultra-liberal Marin County with conservative strongholds in Siskiyou, Shasta, Humboldt, Modoc, and rural Northern California. The result? A rigged district custom-built for lifelong Democrat Jared Huffman, who has represented the seat since 2013. **No Republican can win here.** The population centers in Marin and the coast deliver overwhelming Democratic majorities that drown out conservative voices in the North State. **Fielding a Republican is feel-good symbolism that hands Huffman another term on a silver platter.**

True conservatives understand results matter more than labels. That is why Siskiyou Conservatives endorse **Nicolette Hahn Niman**, the No Party Preference (NPP) rancher challenging Huffman in the June 2, 2026 primary. In this Democrat-engineered district, only a strong independent with deep rural roots can consolidate conservative, independent, and disaffected voters to unseat the incumbent.

Nicolette Hahn Niman is a 22-year Point Reyes rancher, former environmental attorney, and fierce defender of working families against coastal elites. She has never joined a political party, rejecting the partisan games that pit neighbors against each other. Her campaign centers on a powerful conservative truth: **rural America is being deliberately left behind** by out-of-touch Washington Democrats.

Huffman's record proves the point. He played a central role in the deal that shut down multi-generational cattle and dairy operations in Point Reyes National Seashore — destroying family ranches, livelihoods, and a way of life to appease radical environmental interests. While Huffman attended meetings and claimed neutrality, Hahn Niman and her husband fought in court to protect those ranching families. She lives the rural reality Huffman only lectures about. Rural Shasta, Siskiyou and Humboldt residents know he doesn't understand — or care about — their struggles with regulations, taxes, wolves and federal overreach.

Huffman calls her a “single-issue” candidate with a “personal agenda.”

Translation: **She threatens his comfortable coastal-liberal power base..**

Republican candidates are running principled campaigns, but math is math. In a top-two primary under this gerrymandered map, they split the anti-Huffman vote and lose. **Nicolette Niman is the only credible threat capable of advancing to November and defeating the 13-year incumbent.**

This race is about more than one seat. It's about rejecting the radical left's war on rural California — their farms, their energy, their values. Conservatives cannot afford purity tests when victory is possible. Nicolette Hahn Niman offers the best shot to send a fighter for property rights, rural prosperity, and common sense to Congress.

We urge every conservative, independent, and fed-up voter in CA-2 to support Nicolette Hahn Niman. Defeat the gerrymander. Restore representation for real California.

<https://nicoletteforcongress.com/> for more information

Siskiyou County Superintendent of Schools Duties

- Leads the Siskiyou County Office of Education (SCOE), providing educational leadership, fiscal oversight, and direct student services
- Oversees countywide programs, promotes student readiness, manages teacher credentials, and coordinates district collaboration

Key Responsibilities:

- **Fiscal oversight:** Monitors budgets and financial health of 25 districts and 2 charter schools
- **Educational support:** Provides curriculum guidance, teacher training, and mental health services
- **Student programs:** Operates services for foster/homeless youth and alternative education
- **Administrative/legal:** Ensures compliance with regulations, manages credentials, and conducts board elections
- **Community partnerships:** Collaborates on initiatives like Cradle to Careers for Siskiyou
- Works with the Siskiyou County Board of Education, which sets policy, determines superintendent salary, and hears appeals (e.g., expulsions, transfers)

In Siskiyou County, a Superintendent of Education duties center on:

- **Leadership of education systems**
- **Financial oversight and accountability**
- **Student programs and outcomes**
- **Compliance with California law**
- **Coordination between schools, government, and community**

Assemblyman James Gallagher for U.S. Representative of
California 1st Congressional District.



I cannot overstate the importance of this Special Election to finish the remainder of our friend Doug LaMalfa's term in Congress.

Our region has immediate needs that require representation and a champion in Washington DC as quickly as possible. And given the slim majority in the U.S. House of Representatives, this election has significant implications nationwide.

Winning outright on June 2nd and restoring representation must be our mission. And with your help, we can make it happen!

We have a lot of ground to cover, thousands of voters to reach, and several campaign events in the works.

I am ALL IN to honor Doug's legacy, continue to fight for our shared values, and restore our representation. I hope that you will by getting involved in the campaign.

Thank you in advance for considering,

James Gallagher

Assemblyman & Candidate for Congress (CA-1)

Get Involved

Pray that he gets elected

Like his campaign web page: electjamesgallagher.com

Follow him on his Instagram page: [@jamesgallagherca](https://www.instagram.com/jamesgallagherca)

Follow and/or contribute on his campaign web page: electjamesgallagher.com

Volunteer to help distribute the campaign trifolds in Siskiyou

Put a campaign sign on your property. Take a picture and send it to Louise

Help us locate areas to put up large highway campaign signs, take a picture

Post articles about his campaign on Facebook



Wanted to make sure you all seen this from Ginger Sammito

Under the Radar: Why Cartel-Linked Illegal Grows Keep Spreading Across California | Sheriff LaRue. Click on the link below for the video.

https://www.youtube.com/watch?v=EHcC_O44rYo

Just stare at this graphic and it will be clear of how many areas of illegal growing operations. All these sites are now being considered by the California Water Control Board "Safer" program to provide water directly to this area not for human consumption but to provide water to the illegal operations while cutting the water off to the ranchers and farmers.

EZ CARPET CLEANING JANITORIAL
HANDLING ALL YOUR CLEANING NEEDS





Unequal Help in Siskiyou County's Water Crisis

In Mount Shasta Vista, the state spent upward of \$200,000 on an RCAC feasibility study 2025 through the SAFER program and delivered bottled water from October 2024 through March 2026, at additional cost to California taxpayers. The study examined six possible long-term solutions, but the tough local geology makes any fix extremely expensive — with new wells alone costing up to \$60,000 each, all paid for by state taxpayers.

Many of the people living in Mount Shasta Vista don't actually reside there full-time owning homes elsewhere. A large portion are out-of-state operators who come to Siskiyou County to grow illegal cannabis.

Meanwhile, longtime residents in nearby Copco Lake, a small community of about 100 residents directly impacted by Klamath dam removal, and Hawkinsville, established in 1851 as a Gold Rush mining camp, received no feasibility study, no bottled water deliveries, and no comparable state assistance. Hawkinsville has been home to families for 175 years and once had one of the largest Portuguese communities in California. In the late 1800s, roughly half of all Portuguese people in Siskiyou County lived there, and they built the first Portuguese church in California right in Hawkinsville in 1877.

While the state claims it's helping people with unsafe drinking water, much of that support in Mount Shasta Vista appears to be propping up illegal cannabis grows run by organized out-of-state and foreign groups. Same county, same water challenges — but only one area got the state's help. **WHY?**



Buis ye

Tactical Firearms Tra"ning

Christopher Ewens

Private CGW Classes for 3+ St dents

[u nstruc or.com](http://www.instructor.com)

(.530) 235-0721



Kathleen Bergeron, CIC
Agent
License #0674018

Kathleen Bergeron Ins. Agency
Progressive Insurance
Foremost Insurance



347 N. Main St. • Yreka, CA 96097
(530) 842-4400 • cell (530) 340-1515 • fax (530) 842-448
email: bergeron@inreach.com

AB 1664 - Squashing of investigation by Law Enforcement

AB 1664 requires any local agency or sheriff investigating election records to give the Secretary of State and Attorney General written notice within one business day. In the current Riverside County situation, where ballots from the 2025 election face a tight retention deadline and possible destruction as early as May, this notice gives a politically motivated Attorney General critical advance warning. **The Secretary of State and/or Attorney General can immediately file for an injunction, challenge warrants, or seek court relief to block access, potentially delaying or stopping the sheriff from examining the ballots before they are destroyed** — effectively squashing legitimate citizen complaints and time-sensitive investigations into election integrity.

Highly suggest if anyone you know "oppose" this bill on the California Legislative Information website. [Bill Search](#)

Please get the word out.

Ginger

**OPPOSE THIS BILL
AB 1664**



Memorial Day, originally called Decoration Day, was established after the Civil War to honor fallen soldiers by decorating their graves with flowers and flags. Initiated in 1868, it became a federal holiday on the last Monday of May in 1971, expanding from Civil War remembrance to honoring all American military personnel who died in service.

- **Purpose:** Honors U.S. military personnel who died in service
- **Origins:** Began after the Civil War as “Decoration Day,” when communities decorated soldiers’ graves

Key Milestones:

- **1868:** General John A. Logan establishes Decoration Day (May 30)
- **First ceremony:** Held at Arlington National Cemetery honoring Union and Confederate soldiers
- **Post–World War I:** Expanded to honor all fallen service members
- **1882–WWII:** Gradually became known as Memorial Day
- **1968:** Uniform Monday Holiday Act moves it to last Monday in May
- **1971:** Officially recognized as a federal holiday

Traditions & Significance:

- **Poppies:** Symbol of remembrance inspired by “*In Flanders Fields*”
- **National Moment of Remembrance:** 3:00 p.m. local time pause
- **Official birthplace:** Waterloo, New York (designated in 1966)



Click image for the most inspirational video! ←

Ci'fy Counc:U Mee-tings

Yreka: 1st & 3rd Tuesday of each Month @ 6:30pm

Montague: 3rd Monday of each Month @ 5:30 pm

Anta: 4th Monday of each Month @ 5:30 pm

Ft Jones: 2nd Monday of each Month @ 7:00 pm

Redding: 2nd Thursday of each Month @ 5:30 pm

Dunsmuir: 1st & 3rd Thursday of each Month @ 6:00 pm

Dorris: 1st & 3rd Monday of each Month @ 6:00 pm

McClella: 2nd & 4th Monday of each Month @ 6:00 pm

NO on SB 305



**NO GRIZZLY
BEARS IN
CALIFORNIA**

We The People Radio
 Topics and guest speakers focusing on: Fiscal Responsibility
 Limited Government
 Adherence to the Constitution

K NR 1460 AM • Every Sunday, 8 am to 10 am

To call in, (530) 605-4567
 To stream live or chat, go to: www.WeThePeopleRadio.us

Siskiyou County Supervisors

Jess Harris District 1

Phone: 530-643-9084

jharris@co.siskiyou.ca.us

Ed Valenzuela District 2

Phone: 530-926-1733

evalenzuela@co.siskiyou.ca.us

Michael Kobseff District 3

Phone: 530-842-8397

mkobseff@co.siskiyou.ca.us

Nancy Ogren District 4

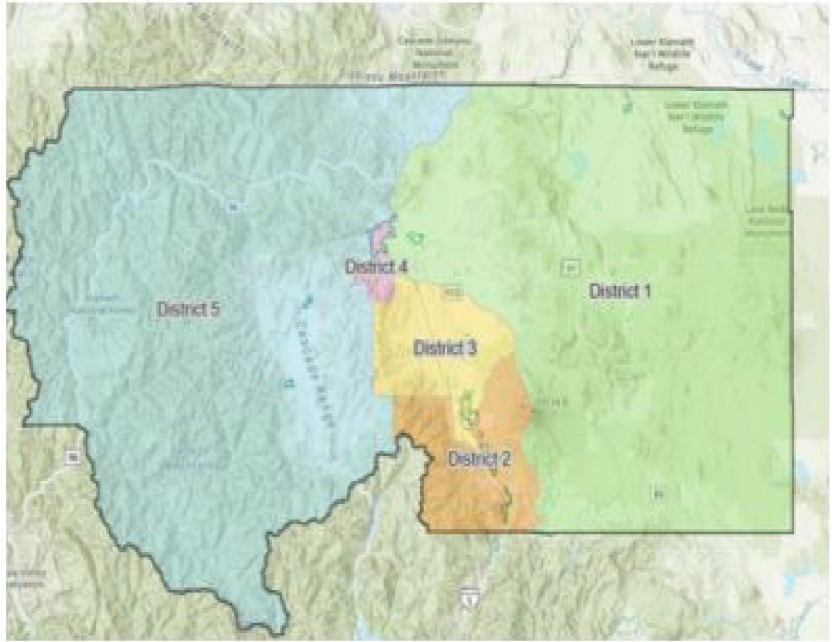
Phone: 530-643-3503

nogren@co.Siskiyou,.ca.us

Ray Haupt District 5, Chair for 2026

Phone: 530-925-0444

rhaupt@co.siskiyou.ca.us



Lash & Esthetic
Services

Total Image Salon

(530) 598-9828

122 3rd St; Yreka, CA

**State Senate District 1 Megan Dahle,
Sacramento Office:**

2174 State Capitol

California 94249-0011 (916) 651-4001

FAX 916-651-4901

4080 Covington Road,

Suite 100A, Granite Bay,

CA 95746; (916) 771-5840

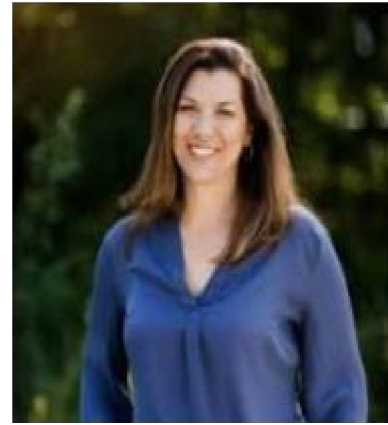
11310 McCourtney Road,

Unit E2/E3., Gross Valley,

CA 95949; (530) 271-1022

1900 Churn Creek Road, Suite 204,

Redding CA 96002; (530) 224-7001



Assemblywoman Heather Hadwick

Assembly District 1

CAPITOL OFFICE: State Capitol Suite 4208,

Sacramento, CA 94249 | 916-319-2001

DISTRICT OFFICE: 280 Hemsted Drive,

Suite 110, Redding, CA 96002 | 530-223-300



Vote in the June Primary

Check your voter registration: Go to
Voterstatus.sos.ca.gov

It is user friendly and only takes minutes

Our Elected Officials

President Donald Trump

1600 Pennsylvania Avenue NW
Washington, D.C. 20510-0504
Comments: 202-456-1111
Switchboard: **202-456-1414**
FAX: 202-456-2461 www.whitehouse.gov
United States Senate Washington, D.C. 20510-0504

Senator Alex Padilla (202) 224-3553

United States Senate
Washington, D.C. 20510-0505
Email Senator@padilla.senate.gov

Doug LaMalfa (Congressional Dist.1) (202) 225-3076

506 Cannon House Office Building
Washington, DC 20515
Redding District Office
2885 Churn Creek Rd Suite C
Redding, CA 96002 (530) 605-5898
www.house.gov/lamalfa

State:

Governor Gavin Newsom

State Capitol, Suite 1173 Sacramento, CA 95814
(916) 445-4633 State of California



